

CWIEME BERLIN

Transformers | Motors | Generators

| 19-21 May 2026

● A Hyve Event

Showcase your products at the largest global supply chain event

Welcome

6,672

visitor footfall

14,665

community footfall

553

exhibitors

85

countries attended

**Top attending
countries:**

Germany, Italy,
Turkey, India, China

3,900+

buyer profiles created

2,800+

meaningful interactions
facilitated through
Connect @ CWIEME

70

speakers

*2024 stats featured

At the forefront of the global electrical revolution, CWIEME Berlin proudly holds the title of the world's largest exhibition dedicated to coil winding, transformer, generator, electric motor manufacturing, and e-mobility

CWIEME Berlin brings together all elements of the global coil winding, transformer, electric motor, generator and e-mobility supply chain – it is where sales and future products are made.

It also proudly features Connect @ CWIEME, the industry's lead gen connections programme for components, raw materials & process machinery manufacturers and engineering procurement and R&D buyers.

CWIEME's Top Product Sectors



Winding Systems
& Supplies



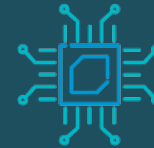
Insulation &
Shielding Materials



Intermediate
Semi-finished
Products &
Materials



Magnets &
Magnetic Materials



Electronic & Electrical
Components



IT & Software



Quality, Test &
Measurement



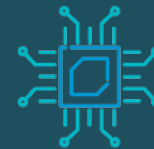
Other Machines &
Manufacturing
Systems



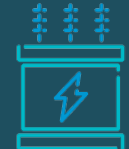
Motor Components
& Accessories



Power Supplies

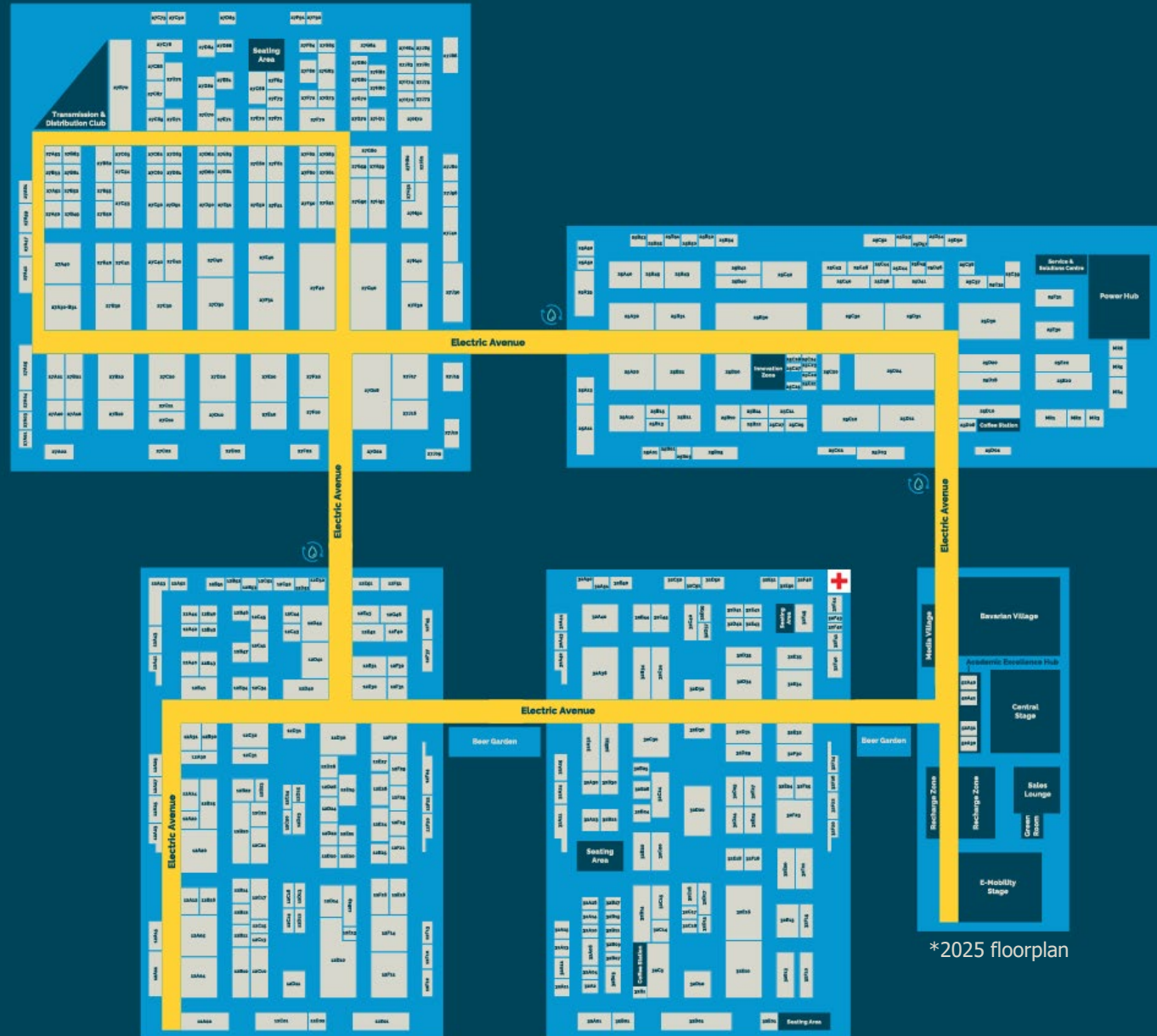


Electromechanical
Components



Transformer
Components &
Accessories

The new & improved floorplan returns for 2026



*2025 floorplan

Key Exhibitors



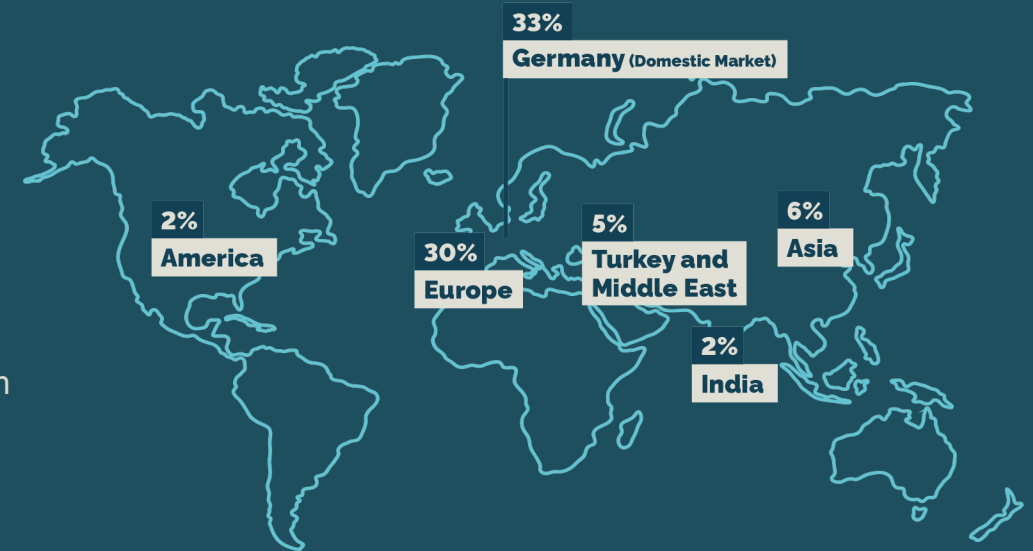
Learn about CWIEME's Audience

Top Industries

Transformer Manufacturing: **26%**
Motor Manufacturing: **22.3%**
Raw & Semi-Finished Materials Supplier: **15.7%**
Components Supplier: **15.1%**
Agent/Distributor: **12.3%**
Electrical & Electronic Manufacturing: **9.3%**
Research & Development: **7.1%**
Process Machinery Supplier: **5.1%**
Original Equipment Manufacturing: **5%**
Other: **2.2%**

Top Job Functions

Design Engineering & Product Design
Research & Development
Production & Manufacturing
Electrical Engineering
Technical Engineering
General & Corporate Management
Mechanical Engineering
Procurement, Supply Chain & Logistics
Industrial Engineering



Top Reasons for Attending

Network and make **new contacts**
Meet existing **customers and partners**
Buy & Source **new products**

Top visiting companies



CWIEME Features

CWIEME WOMEN IN ENGINEERING

The **Women in Engineering** programme provides a platform for dialogue, raising awareness and supporting the industry's efforts to create more inclusive and equitable workplaces for employees.

CWIEME INNOVATION ZONE

The **Innovation Zone** is a dynamic area designed to spotlight pioneering companies and ground-breaking solutions that are shaping the future of the electrical and transformer industries.

CWIEME FUTURE ENGINEERS

The **Future Engineers** programme bridges the talent gap by bringing together faculty and students, where participants will not only leave with a deeper understanding of the industry, but also with a network, practical skills and inspiration for future innovations.

CWIEME TALKS

Through our **CWIEME Talks** platform, we offer a wealth of resources, from engaging talks with leading industry professionals to in-depth whitepapers that provide actionable strategies and deep dives into the latest trends and innovations.

CWIEME Features

The **Transmission & Distribution Club** brings together industry leaders, engineers, and procurement professionals to network, collaborate, and conduct business in a focused environment. The lounge is exclusive to OEMs, TSOs and Grid Operators, and provides a central hub for discussions on grid innovation, power transmission, and energy distribution.

The **C-Suite Club** is designed for senior executives, thought leaders, and key decision-makers in the electromechanical, energy, and manufacturing industries and with a tailored agenda covering Transformers, Electric Motors, and Emerging Technologies, participants will engage in conversations under the Chatham House Rule to ensure open, candid dialogue.

The **Academic Excellence Hub** is a dedicated platform bridging academia and industry together, providing a stage for researchers, students, and professionals to showcase groundbreaking studies, discuss emerging technologies, and explore future trends.

The **CWIEME Workshop** is a highly interactive, hands-on session designed for professionals in the industrial motor sector. Featuring a unique, discussion-driven format, this session will provide practical, insightful takeaways and tackle key topics such as circular economy models, energy efficiency improvements, and digitalization in motor manufacturing.

Learn at CWIEME

2 stages

47

sessions

70

speakers

2,448

visits to sessions

36.7%

of overall visitors
visited content



Central Stage

Most attended session:

Optimization of Laminated Stack
for Electric Motors in Electrified
Vehicles

Speaker:

Francis van der Sluis, Senior
Engineer Bosch Transmission
Technology B.V. Research



E-Mobility Stage

Most attended session:

Latest Epoxy Resin Innovations
for Mass Production of Magnet-
Free Rotor Designs

Speaker:

Dr. Massimiliano Balboni,
Marketing Manager Automotive
(Composite & E-Mobility)
Huntsman Corporation

CWIEME

INNOVATION ZONE

Where the future of electric power generation and distribution is shaped.

At CWIEME Berlin, we make it our commitment to foster connections that will accelerate the global electrification and support the green transition. Innovation and digitalization are essential, not just trends, for achieving operational excellence, enhanced efficiency, sustainability, and long-term success

Created to welcome exhibitors to CWIEME Berlin, with products such as:

- Artificial Intelligence and Machine Learning
- Monitoring and Predictive Maintenance
- IoT and Digital Tools
- Design Optimisation
- Diagnosis
- Smart Sensors
- Consulting Services
- Software
- Data Analytics
- Start-ups
- New materials



CWIEME INNOVATION ZONE

Be at the forefront of the Electric Revolution

1

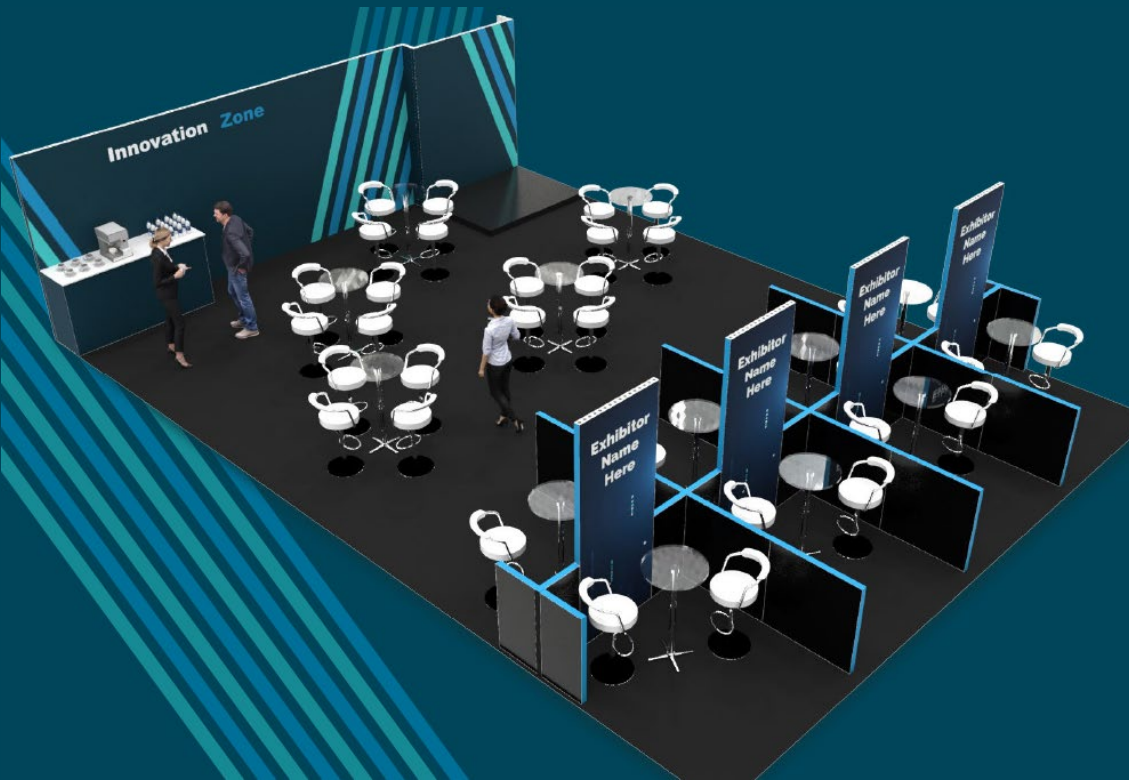
All-inclusive stand solutions with maximum impact and none of the fuss.

2

On-stage pitch ensuring brand exposure to industry peers and potential clients.

3

Access to
Connect @ CWIEME*



Package - €2,740

Stand Area	4 sqm
Furniture	1x high table 2x bar stool
Connect @ CWIEME	Included
Power Connection	Included

Printed Graphics	Included
Carpet	Included
Onsite Branding	Included
On-stage pitch	Included
Hidden costs	Zero

CONNECT @ CWIEME

*Connect @ CWIEME is the industry's leading connections programme, bringing together components, raw material and process machinery suppliers with thousands of customers. Generate leads, re-engage with existing contacts, identify new opportunities, and launch products and services to buyers from across the world.

Want more information? Speak to our team today:
sales@cwimeevents.com

€210 Additional Insurance
Participation Fee

As a participating exhibitor has been arranged on your behalf to protect you, your fellow exhibitors and our visitors. By providing satisfactory evidence of adequate alternative Public Liability insurance cover, you will be entitled to a credit in respect of the insurance participation fee.

Stand Solutions

Shell Scheme

9-18 sqm includes...

- Grey carpet tiles — excluding plastic covering
- White system wall elements in aluminum frame 250 cm high
- White fascia 40cm deep
- White name board per open side in black lettering
- 1 x 120 watt spotlight fitting & bulb per 4 square meters
- Stand cleaning on final build day only
- 1 table with a white round top — albaredo 70cm high
- 2 chairs with a black fabric seating — asti chairs
- 1 white lockable counter — bern lockable counter
- 1 waste bin — abano
- 1x 3.3 KW mains connection Including 1x 1kw socket

Pricing from...

Stand 9 sqm : €7,272

Connect@CWIEME : €1,750

Insurance fee : €210

Total : €9,232

Stand 12 sqm : €9,696

Connect@CWIEME : €1,750

Insurance fee : €210

Total : €11,656



Connect@CWIEME – Promotional package

- Listing on the CWIEME Website
- Listing on the CWIEME Smartphone app
- Listing on the printed Navigation Maps distributed onsite
- Listing and access to the Connect platform: Gain full visibility of the visitors registered to attend the event and arrange meetings at your stand with relevant buyers.

Stand solutions

Show Ready

- ✓ Effective and stylish
- ✓ Stress-free, no need to appoint a stand builder. We build the stand for you, just send us the artwork for the wall graphics and choose the carpet color.
- ✓ Eco-sustainable, every part of the Show Ready is recyclable nothing goes to waste.

Show Ready package

- Full-colour tension graphics
- 2 x 500w single sockets
- LED arm lights (1x 1.5 linear metre)
- Velour carpet (choice of colours)
- Storage Room
- Project management
- Installation, dismantling and transportation
- Furniture can be ordered additionally.

Pricing from...

Stand 9 sqm : €9,234

Connect@CWIEME : €1,750

Insurance fee : €210

Total : €11,194

Stand 12 sqm : €12,312

Connect@CWIEME : 1,750

Insurance fee: €210

Total : € 14,272



Connect@CWIEME – Promotional package

- Listing on the CWIEME Website
- Listing on the CWIEME Smartphone app
- Listing on the printed Navigation Maps distributed onsite
- Listing and access to the Connect platform: Gain full visibility of the visitors registered to attend the event and arrange meetings at your stand with relevant buyers.

We are looking forward to discussing in more detail how CWIEME can support your business.



NICOLA ACAMPORA

Head of Growth

T: +44 (0)203 5459792

M: +44 (0)7702 809683

E: Nicola.Acampora@coilwindingexpo.com



TOMAS COLLIS

Sales Manager

T: +44 (0) 20 3545 9431

E: Tomas.Collis@cwimeevents.com



CHRISTOPH BREIMANN

Sales Manager, DACH

T: +44 (0) 2035459482

E: Christoph.Breimann@cwimeevents.com



DYLAN GAFORI

Sales Manager, DACH

T: +44 20 3545 9440

E: Dylan.Gafari@cwimeevents.com



MARK JANAWAY

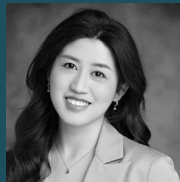
Sales Manager,

Turkey, India, USA & Middle East

T: +44 (0)203 5459798

M: +44 (0)7778 612634

E: Mark.Janaway@coilwindingexpo.com



LINHUI KANG

Sales Manager, APAC

T: 0086 53308863

M: 0086 17717068115

E: Linhui.Kang@coilwindingexpo.com



MATTEO OLIVA

Sales Manager

T: +44 (0) 20 3545 9527

E: Matteo.Oliva@cwimeevents.com

CWIEME BERLIN

Transformers | Motors | Generators

19-21 May 2026

● A Hyve Event

Find out more at berlin.cwimeevents.com